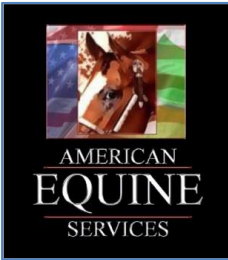
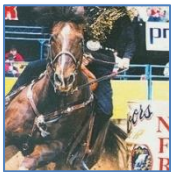
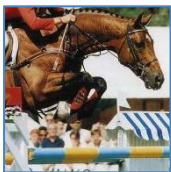


CURRICULUM VITAE



APPRAISAL



RONNY

&

MICHELLE
STALLINGS

EQUINE LITIGATION SUPPORT

Professional Service from Professional Horsemen

SUMMARY: VALUATION EDUCATION

- 45 Hours each in Equine Specialty (ASEA)
- 40 Hours Advanced Principles of Valuation (ASEA)
- 35 Hours each in Principles of Valuation (ASEA)
- 40 Hours Real Estate Principles & Practices (UNT)
- 24 Hours IRS Ethics with 2 hours per year (CSEA)
- AS UNT - University of North Texas, Denton
- CSEA - California Society of Enrolled Agents EA -
- American Society of Equine Appraisers
- EA, IRS Enrolled Agent

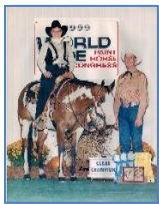
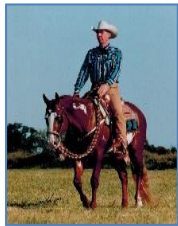
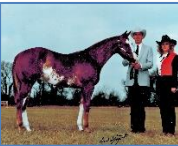
SUMMARY: YEARS OF SERVICE

- 44 Consecutive Years as Equine Professionals
- 40 Years' Experience in Informal Appraisal
- 25 Years' Experience Preparing Tax Returns
- 16 Years Formal USPAP Appraisal Experience
- 16 Years as a Formal IRS Qualified Appraiser
- 16 Years Courtroom and Deposition experience

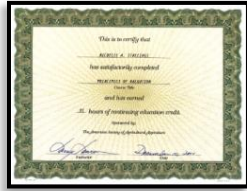
Reports are developed in accordance with the generally accepted standards as defined in the *Uniform Standards of Professional Appraisal Practice* (USPAP). These standards were implemented by the Appraisal Standards Board (ASB) of the Appraisal Foundation and correspond to relevant Treasury Regulations in §§1.170. In accordance with Treasury regulations, a "qualified appraiser" is an individual who earned an appraisal designation from a recognized professional appraiser organization for demonstrated competency in valuing the type of property being appraised or who has met certain minimum education and experience requirements. The Stallings meet this criteria.

Ronny and Michelle Stallings successfully completed professional-level coursework relevant to evaluating horses from the *American Society of Equine Appraisers* (ASEA) which was a professional appraiser organization recognized by the Appraisal Foundation in 2000 and 2001 when they took the courses. At the time, ASEA's equine valuation course was the only one of its kind recognized and approved by the Appraisal Foundation's Appraisal Qualification Board. All valuation related reports developed at American Equine Services comply with Treasury Regulations concerning "qualified appraisals" and all reports concerning horse issues.

SUMMARY OF BACKGROUND AND EXPERIENCE



American Equine Services is uniquely staffed by qualified experts and skilled horsemen that have over 40 years' experience in all facets of the equine industry as successful professionals. Company owners Ronny and Michelle Stallings have been training, breeding, showing, evaluating, managing, purchasing and selling horses for most of their lives. They have experience with numerous breeds and disciplines including Quarter and Paint horses, Thoroughbreds, Arabians, Standardbreds, Appaloosas and Warmbloods. In addition to valuation, valuation review and consulting services, the Stallings' practice encompasses nearly every aspect of the horse industry including but not limited to board, care, custody and control issues, accident investigation, breeding, sales, training, showing, lessons, agent responsibilities and other equine business related issues.



The Stallings both completed and passed a *Principles of Valuation* course that was developed in accordance with the *Uniform Standards of Professional Appraisal Practice (USPAP)* in 2001. These valuation principles are relevant for all personal property appraisals which includes all types of animals. The American Society of Equine Appraisers (ASEA) taught this course. The Stallings were also tested by ASEA in *Equine Specialty* to validate proficiency in horse related issues. In 2002, Michelle completed ASEA's *Advanced Principles of Valuation* course. The Stallings' equine valuation education, technical expertise, broad-based equine knowledge and experience make them qualified to appraise nearly every breed of horse in most disciplines and testify as expert witnesses in all facets of the horse industry.

Ronny and Michelle Stallings have been evaluating, training, showing, breeding and selling world class Paint and Quarter horses for over 40 years. Ronny Stallings was one of the top trainers in the American Paint Horse Association, having personally bred, trained and shown over 100 horses to National and World Championship titles, honor roll titles, superior awards registers of merit and regional awards. He has an impressive list of lifetime accomplishments, and is a nationally and internationally known professional. Ronny's family was established in the Denton County, Texas the late 1850's raising cattle. His sole source of income and employment has been in the horse business since 1967 and he is proficient in a multitude of disciplines with several breeds.

Michelle was born in Canada where worked with Thoroughbred and Anglo-Arab hunter/jumpers until 1973. She moved to Texas and began a professional career showing, breeding, purchasing and selling horses to Brazil, Italy, Germany and Canada. Michelle imported a Thoroughbred son of the great race sire *Bold Ruler* for breeding purposes, bred many Quarter, Paint and Arabian stallions by live cover and artificial insemination and shipped frozen semen to Australia. She competed in the Dressage, Cutting, Jumping, Hunt Seat, Halter, Barrel Racing, English and Western Pleasure disciplines for over 25 years. Michelle is an IRS Enrolled Agent, Master Tax Advisor and received a certification as an equine appraiser in 2001.

Courts in multiple states have accepted Michelle as an expert witness and valuation expert for Thoroughbreds, Standardbreds, Warmbloods, Quarter Horses and Paint horses in multiple disciplines. She has developed appraisals for Federal Tax Court, the U. S. Justice Department and U. S. Marshal's Service in Texas, the University of Tennessee; Louisiana Attorney General and the Louisiana Department of Justice. Michelle is an IRS Enrolled agent and has been a testifying expert since 2002. She has testified in IRS Tax Court and in civil trials across the United States and has completed over 200 assignments.



Section of Litigation



AMERICAN HORSE COUNCIL



CURRENT AND PAST PROFESSIONAL AFFILIATIONS

- American Paint Horse Association (APHA) Lifetime Member
- American Quarter Horse Association, (AQHA) Lifetime Member
- American Society of Equine Appraisers (ASEA) Past Member
- National Reining Horse Association, (NRHA) Lifetime Member
- Tennessee Walking Horse Breeder's & Exhibitors Association (TWHBEA)
- American Bar Association, (ABA) Associate Member - Section of Litigation
- Thoroughbred Owners and Breeders Association (TBA)
- National Barrel Racing Association (NBRA)
- National Cutting Horse Association (NCHA)
- United States Equestrian Federation (USEF)
- United States Dressage Federations (USDF)
- Pinto Horse Association (PtHA)
- Arabian Horse Association (AHA)
- American Horse Council (AHC)
-

SUMMARY OF EXPERIENCE

- Litigation - U.S. Marshall's Service - Dallas, Texas
- Litigation - Sideman & Bancroft LLP – Tax Court, San Francisco, California
- Litigation - O'Connell & Avery - Austin, Texas
- Litigation - Wheatley, Segler, Osby & Miller, LLC - Yukon, Oklahoma
- Litigation - Attorney General, Knoxville, Tennessee for U of T
- Litigation - Joe Gallo-Wilson, Elser, Moskowitz, Edelman Dicker LLP, NJ
- Litigation - Utica National Insurance Company, Binghamton, NY
- Litigation - Engvall & Hlavinka, LLP - Houston, TX
- Litigation - Travelers Insurance
- Litigation - Katine & Nechman - Houston, TX
- Litigation - Hanna Law Firm, Attorneys
- Litigation - Adkins Law Firm, Attorneys
- Litigation - Wise & Wise Law Firm
- Litigation - Drew Law Firm, Attorneys
- Litigation - Shiro & Shiro LLP - NC
- Litigation - Yontz Law Firm, Attorneys
- Litigation - Geico Insurance Company
- Bankruptcy - Mark Weisbart, Attorney
- Charitable Contribution - Tracy Barnett
- Charitable Contribution - Dallas George
- Charitable Contribution - Ron White
- Charitable Contribution - Stacy Bergh
- Charitable Contribution - Will Edwards
- Charitable Contribution - Bob Jones
- Charitable Contribution - Sally Griffin
- Charitable Contribution - Dave Wiggins

EXPERT WITNESS TESTIMONY

- 22 Courtroom Testimonies , 11 Depositions